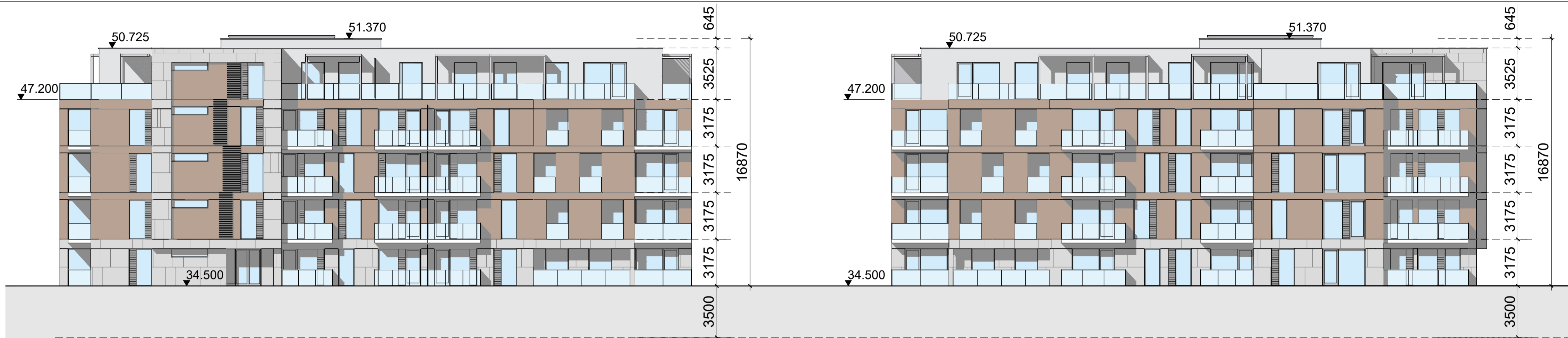
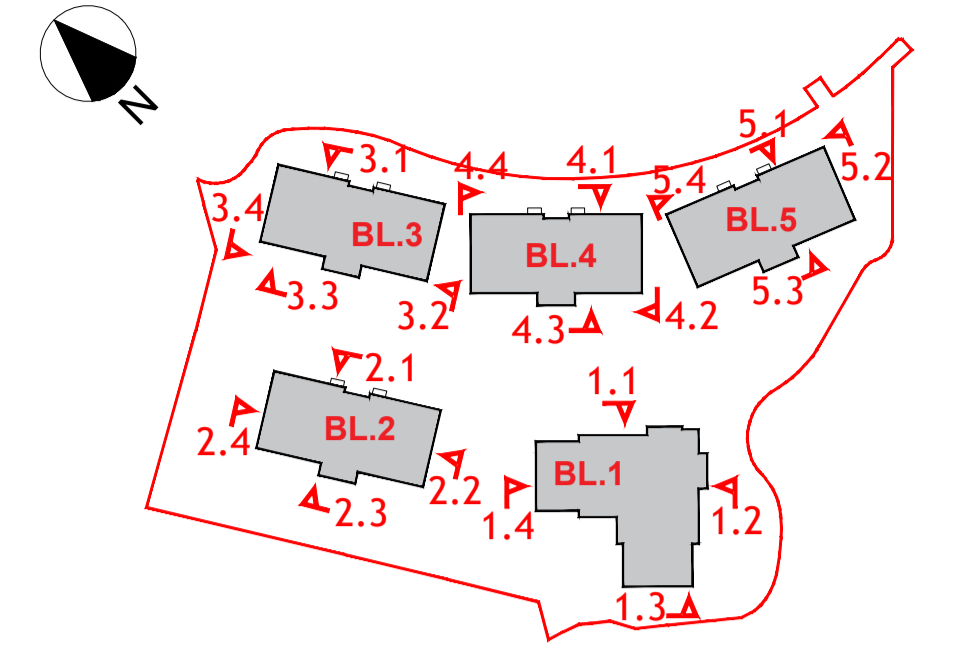


NOTES: NO DIMENSIONS TO BE SCALED FROM THIS DRAWING.
 ALL DIMENSIONS TO BE CHECKED BY THE CONTRACTOR ON
 SITE. ANY ERRORS OR DISCREPANCIES TO BE REPORTED TO
 THE ARCHITECTS IN CHARGE.



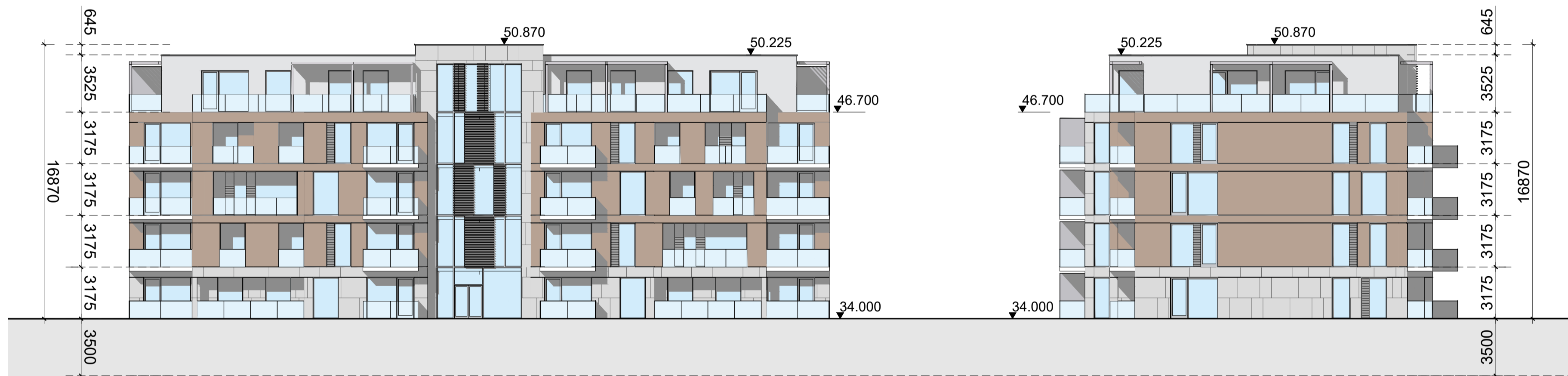
BLOCK 1 - NORTH-EAST ELEVATION (1.1)
1:200

BLOCK 1 - SOUTH-EAST ELEVATION (1.2)
1:200



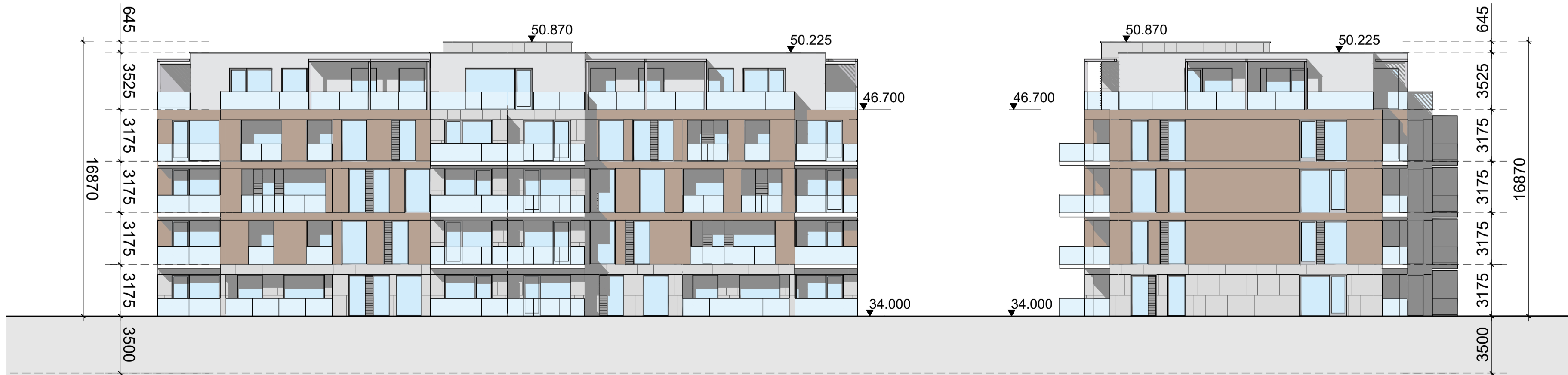
BLOCK 1 - SOUTH-WEST ELEVATION (1.3)
1:200

BLOCK 1 - NORTH-WEST ELEVATION (1.4)
1:200



BLOCK 2 - NORTH EAST ELEVATION (2.1)
1:200

BLOCK 2 - SOUTH EAST ELEVATION (2.2)
1:200



BLOCK 2 - SOUTH-WEST ELEVATION (2.3)
1:200

BLOCK 2 - NORTH-WEST ELEVATION (2.4)
1:200

BLOCKS 1 & 2 ELEVATIONS **PLANNING**

KMD ARCHITECTURE
 TOP FLOOR, 3 WESTLAND SQ.
 PEARSE ST. DUBLIN 2, IRELAND
 TEL: 353 (1) 877 0077



PROJECT DETAILS
 SHD PROPOSAL
 SOUTHGATE NORTH, DUBLIN ROAD,
 DROGHEDA, CO. MEATH

SCALE	1:200@A1	PLOTTED ON	2021-07-07
PAPER SIZE	A1	PROJECT NO.	17007
DRAWN	DA	DRAWING NO.	A12-203
		REVISION	A