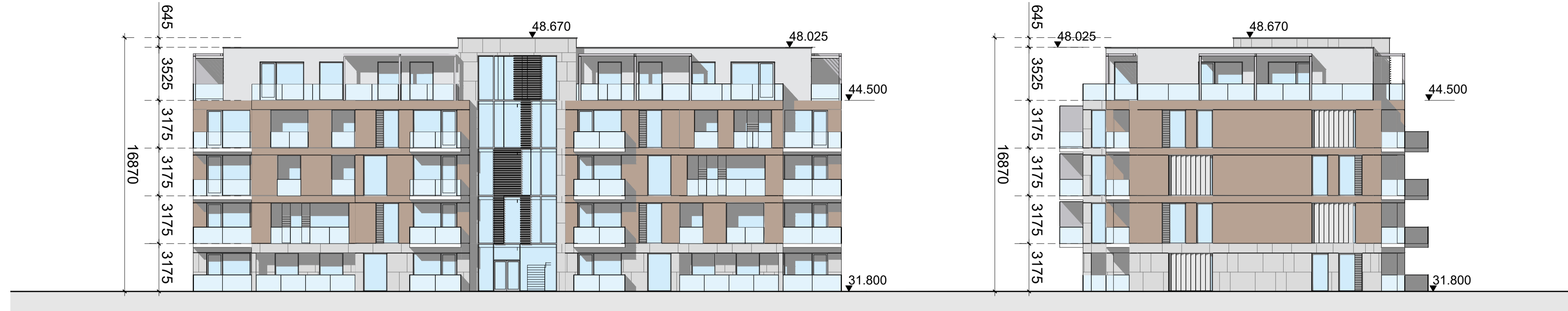
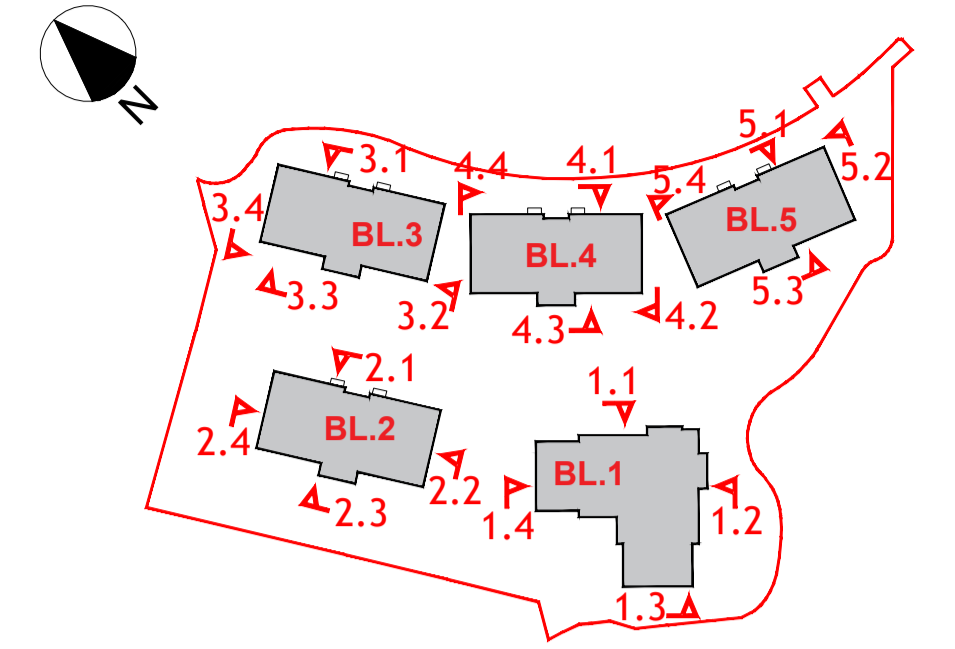
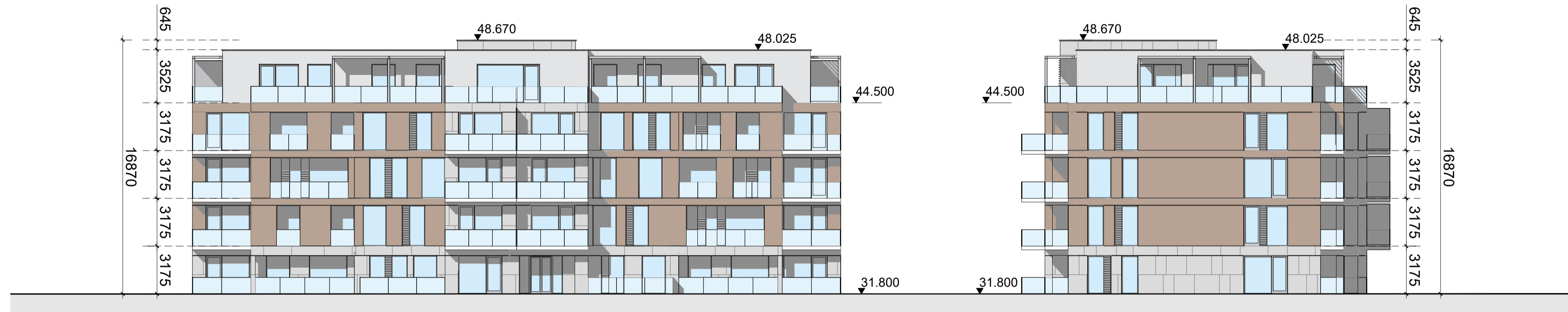


NOTES: NO DIMENSIONS TO BE SCALED FROM THIS DRAWING.  
ALL DIMENSIONS TO BE CHECKED BY THE CONTRACTOR ON SITE. ANY ERRORS OR DISCREPANCIES TO BE REPORTED TO THE ARCHITECTS IN CHARGE.



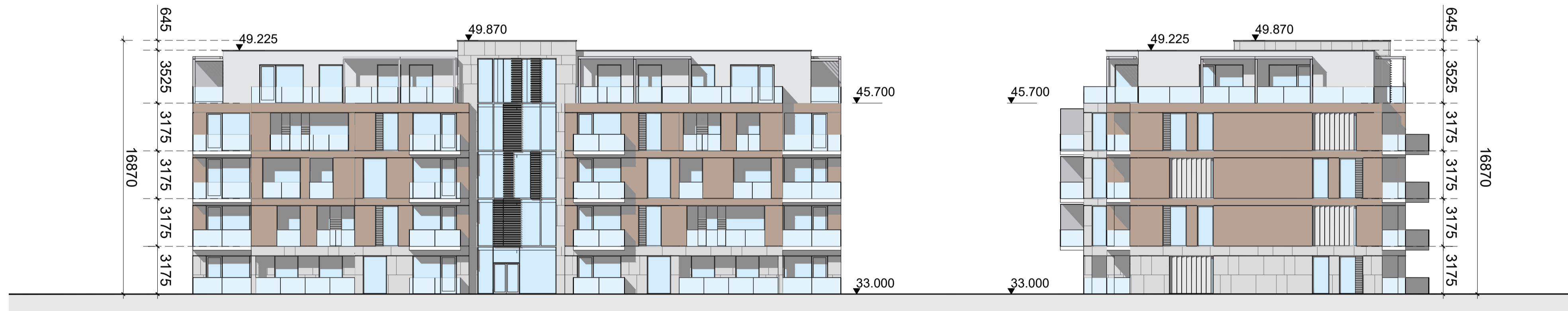
BLOCK 3 - NORTH EAST ELEVATION (3.1)  
1:200

BLOCK 3 - SOUTH EAST ELEVATION (3.2)  
1:200



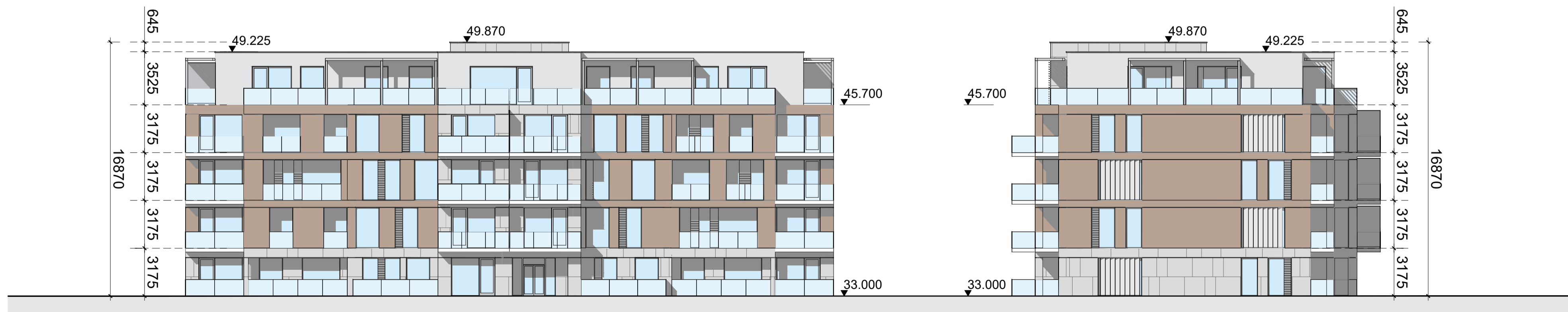
BLOCK 3 - SOUTH-WEST ELEVATION (3.3)  
1:200

BLOCK 3 - NORTH-WEST ELEVATION (3.4)  
1:200



BLOCK 4 - NORTH EAST ELEVATION (4.1)  
1:200

BLOCK 4 - SOUTH EAST ELEVATION (4.2)  
1:200



BLOCK 4 - SOUTH-WEST ELEVATION (4.3)  
1:200

BLOCK 4 - NORTH-WEST ELEVATION (4.4)  
1:200

BLOCKS 3 & 4 ELEVATIONS **PLANNING**

KMD ARCHITECTURE  
TOP FLOOR, 3 WESTLAND SQ.  
PEARSE ST. DUBLIN 2, IRELAND  
TEL: 353 (1) 877 0077



PROJECT DETAILS  
SHD PROPOSAL  
SOUTHGATE NORTH, DUBLIN ROAD,  
DROGHEDA, CO. MEATH

SCALE	1:200@A1	PLOTTED ON	2020-11-24
PAPER SIZE	A1	PROJECT NO.	17007
DRAWN	DA	DRAWING NO.	A12-204
		REVISION	A