

ROAD SIGN (SINGLE POST)  
SCALE 1:25

FIGURE 2A

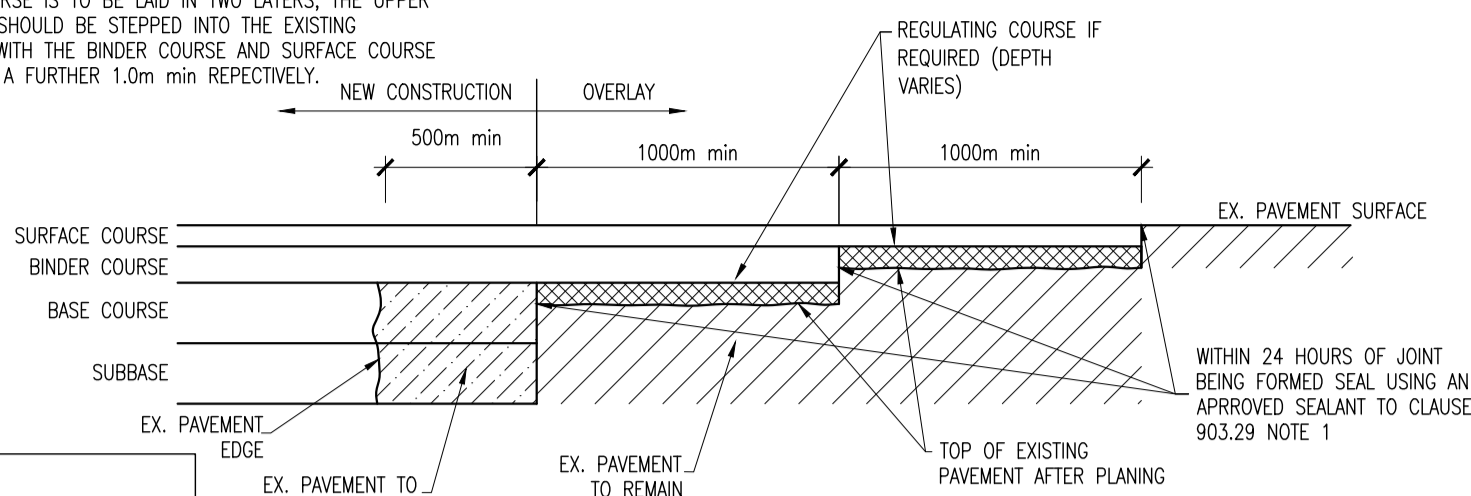
NOTES:  
1. EDGES OF EXISTING CARRIAGEWAY TO BE CUT BACK BY 0.5m WITH A ROTARY SAW TO FORM A VERTICAL FACE AND PRIMED IN ACCORDANCE WITH CLAUSE 920 (NOTE 1).

2. WHERE THE BASE COURSE IS TO BE LAID IN TWO LAYERS, THE UPPER LAYER OF BASE COURSE SHOULD BE STEPPED INTO THE EXISTING PAVEMENT BY 1.0m MIN WITH THE BINDER COURSE AND SURFACE COURSE TO BE EACH STEPPED IN A FURTHER 1.0m MIN RESPECTIVELY.

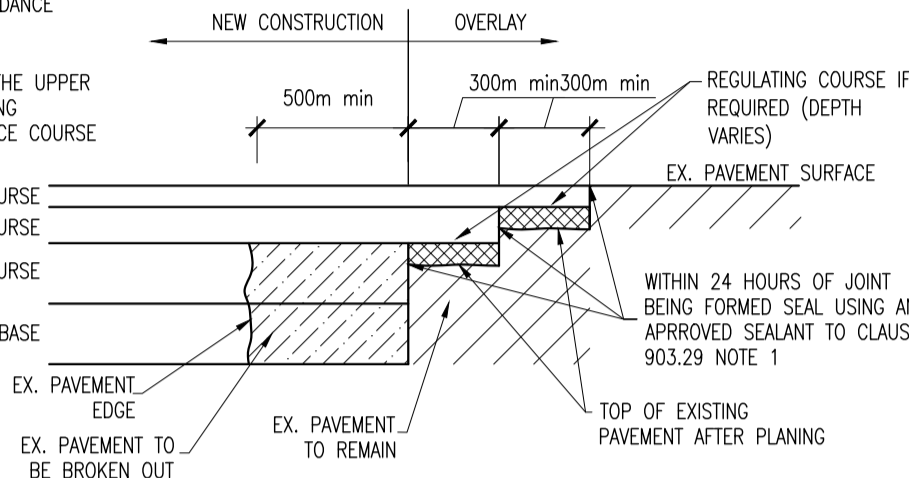
NOTE:  
ALL FACES OF COLD UPSTANDING EDGES SHALL BE TREATED TO CLAUSE 903.26 NOTE 1

NOTES:  
1. EDGES OF EXISTING CARRIAGEWAY TO BE CUT BACK BY 0.5m WITH A ROTARY SAW TO FORM A VERTICAL FACE AND PRIMED IN ACCORDANCE WITH CLAUSE 920 (NOTE 1).

NOTE:  
ALL FACES OF COLD UPSTANDING EDGES SHALL BE TREATED TO CLAUSE 903.26 NOTE 1



TRANSVERSE JOINT  
SCALE 1:25

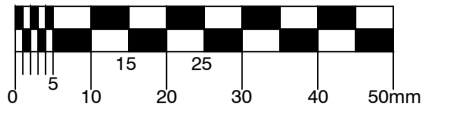


LONGITUDINAL JOINT DETAIL  
SCALE 1:25

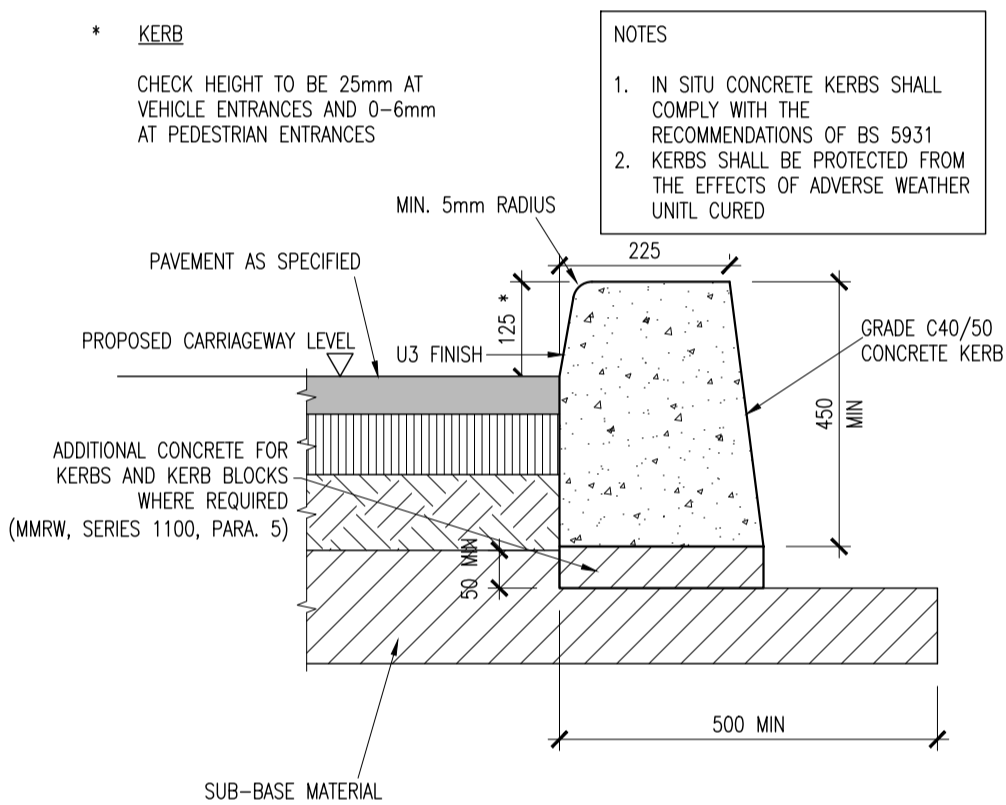
FIGURE 2B

© COPYRIGHT OF THIS DRAWING IS RESERVED BY DBFL CONSULTING ENGINEERS. NO PART SHALL BE REPRODUCED OR TRANSMITTED WITHOUT THEIR WRITTEN PERMISSION.

ON ORIGINAL

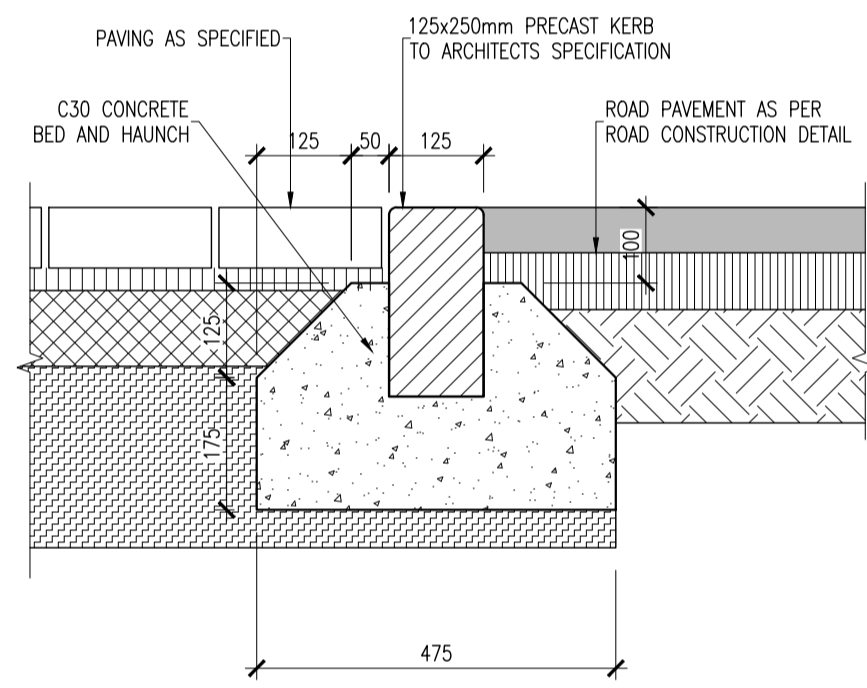


- NOTES:
- ALL WORKS TO BE CONSTRUCTED IN ACCORDANCE WITH THE NRA SPECIFICATION FOR ROAD WORKS UNLESS OVERRIDDEN BY LOCAL OVERSEEING AUTHORITY'S STANDARDS
  - SUB-BASE MATERIAL SHALL COMPLY WITH CLAUSE 808 GRANULAR MATERIAL TYPE B OF NRA'S SPECIFICATION FOR ROAD WORKS (SRM) & SHALL SATISFY THE REQUIREMENTS OF TABLE 6/4 & 6/2.
  - SUB FORMATION & CAPPING MATERIAL SHALL COMPLY WITH CLAUSE 613 OF THE NRA'S SPECIFICATION FOR ROAD WORKS & SHALL SATISFY THE REQUIREMENTS OF TABLE 6/1 & 6/2.
  - STONE BLINDING WITH 2-6.5mm AGGREGATE SHALL MEET THE FOLLOWING GRADINGS, IN ACCORDANCE WITH IS EN 13242
- | BS SIEVE SIZE (mm) | % BY MASS PASSING |
|--------------------|-------------------|
| 14                 | 100               |
| 10                 | 98-100            |
| 6.3                | 80-99             |
| 2.0                | 0-20              |
| 0.5                | 0-5               |
- ANY ROADS PROPOSED TO BE USED FOR CONSTRUCTION TRAFFIC ARE TO HAVE INCREASED DEPTH OF SUB-BASE FOR THE DURATION OF CONSTRUCTION IN ACCORDANCE WITH DBFL SPECIFICATIONS.
  - ALL WORKS SHALL BE COMPLETED IN ACCORDANCE WITH THE REQUIREMENTS OF THE LOCAL AUTHORITY.
  - ALL AGGREGATES PROPOSED FOR USE ON THIS SCHEME SHALL MEET FULLY THE REQUIREMENTS OF THE NRA SPECIFICATION FOR ROAD WORKS AND IN ADDITION THE REQUIREMENTS STATED IN STANDARD RECOMMENDATION S.8. 21:2014 GUIDANCE ON THE USE OF I.S. EN 13242:2002 +A1:2007-AGGREGATES FOR UNBOUND AND HYDRAULICALLY BOUND MATERIALS FOR USE IN CIVIL ENGINEERING WORK AND ROAD CONSTRUCTION.
  - ALL REFERENCES TO SERIES 900 OF NRA SPECIFICATION REFER TO SERIES 900 DATED DECEMBER 2014.



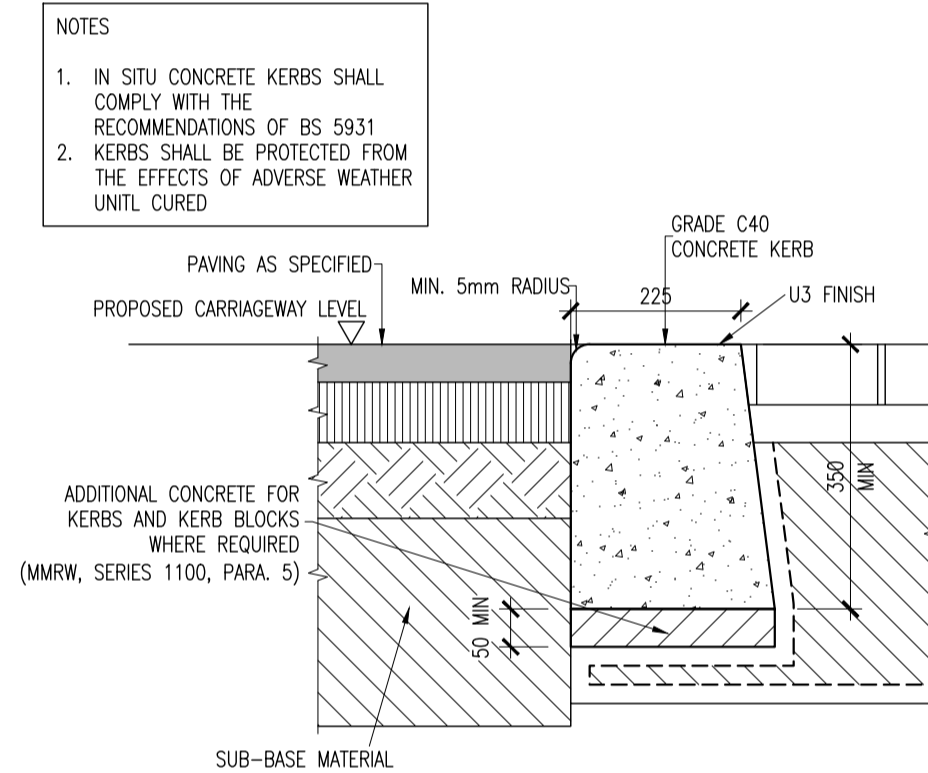
INSITU CONCRETE KERB DETAIL  
SCALE 1:10

FIGURE 2C



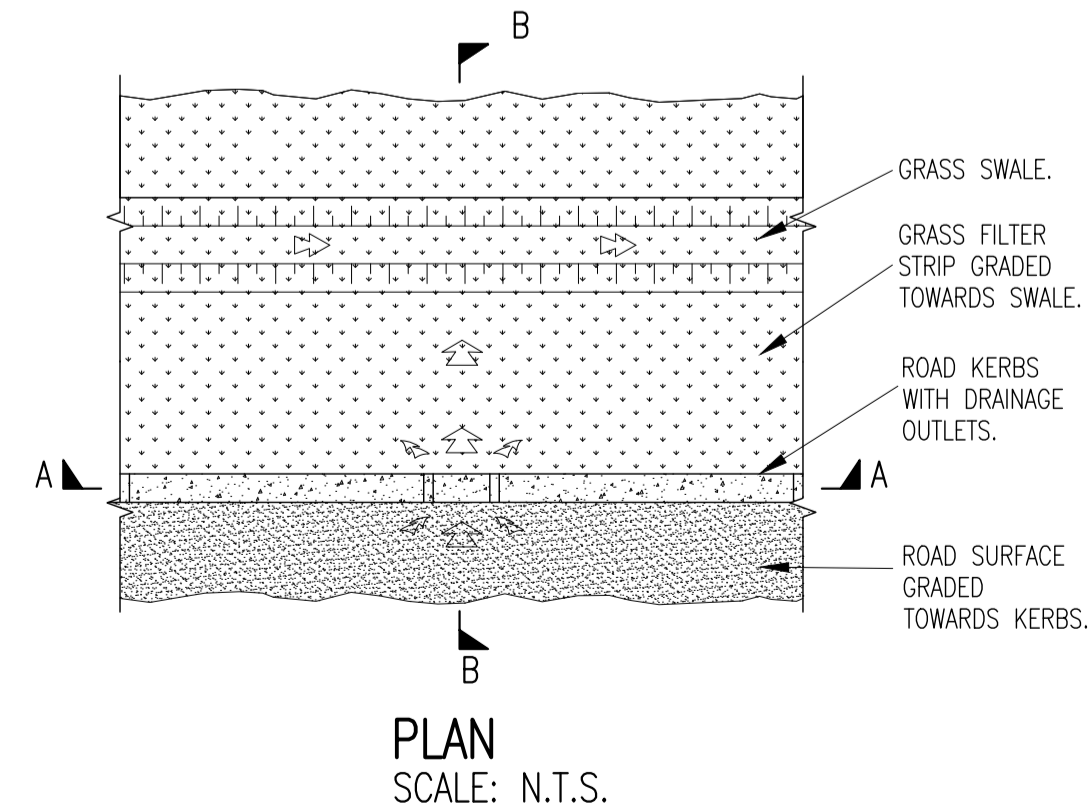
EDGE KERB DETAIL (DBM TO PAVING BLOCK)  
SCALE 1:10

FIGURE 2D

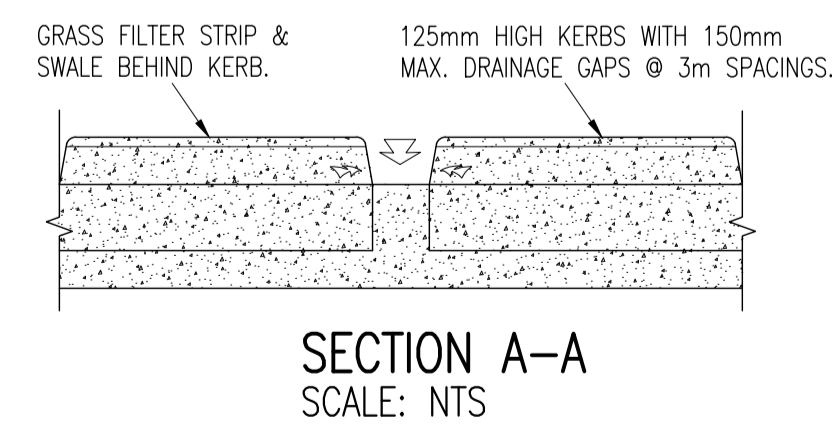


FLUSH KERB DETAIL  
SCALE 1:10

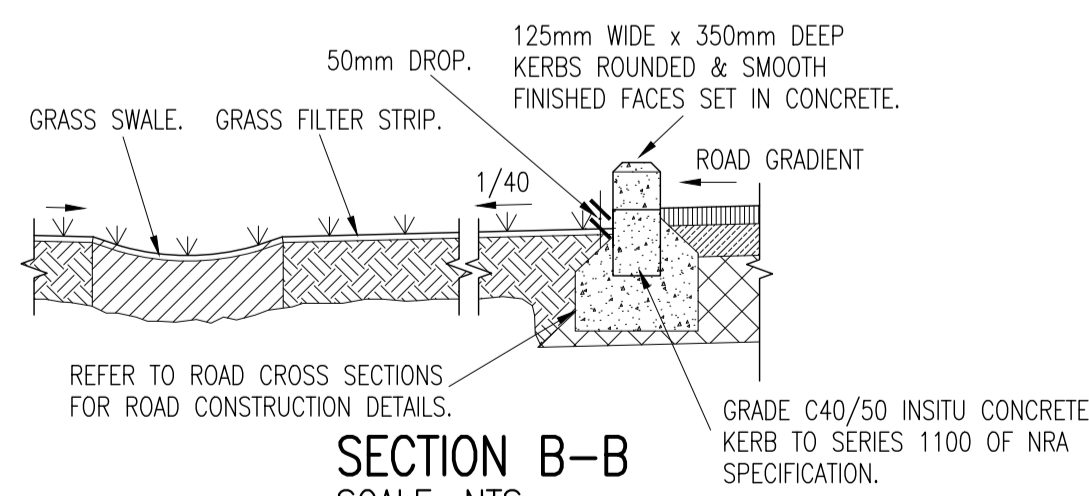
FIGURE 2E



PLAN  
SCALE: N.T.S.



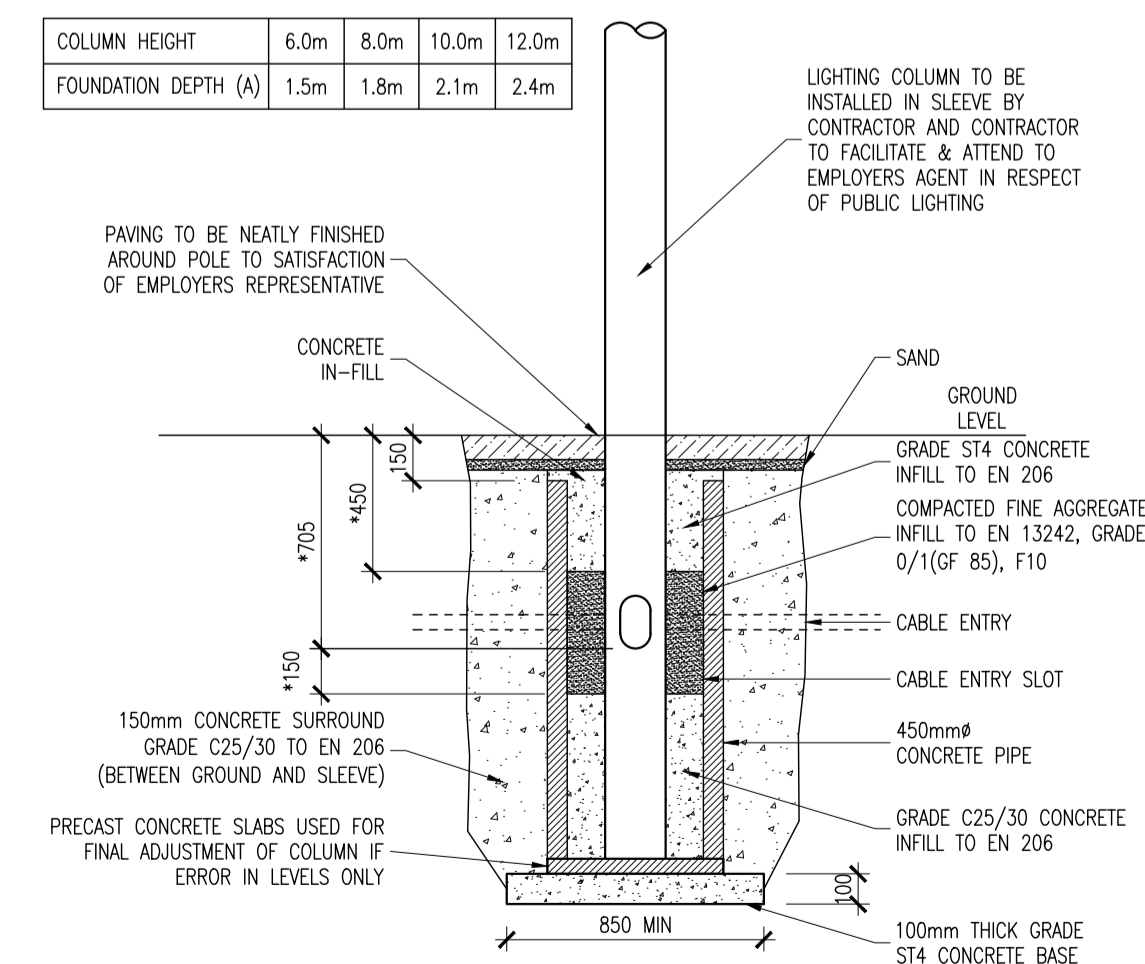
SECTION A-A  
SCALE: N.T.S.



SECTION B-B  
SCALE: N.T.S.

TYPICAL ROADSIDE LATERAL KERB INLET  
(NON-CONTINUOUS KERB)

FIGURE 2F



- NOTE:
- CONTRACTOR TO AGREE DIMENSIONS AND SETTING OUT WITH EMPLOYERS AGENT
  - DIMENSIONS MARKED \* ARE DEPENDANT ON LIGHTING COLUMN SUPPLIED AND MUST BE AGREED WITH THE EMPLOYER'S REPRESENTATIVE.

TYPICAL LAMP STANDARD FOUNDATION  
SCALE 1:25

FIGURE 2G

REV	DATE	DESCRIPTION	BY	CHKD
A	080721	SHD STAGE 3 PLANNING	GMC	ASM

**PLANNING SHD STAGE 3**

DESIGNED	DWG	PREPARED	GMC
DATE	JUL 2020	CHECKED	DMW

DBFL Consulting Engineers  
Dublin Office: Cornhill House, Upper Ormond Quay, Dublin 7, Ireland. PHONE +353 1 400 4000 FAX +353 1 400 4050  
Waterford Office: Unit 2, The Chandlers, 1-2 O'Connell Street, Waterford, Ireland. PHONE +353 51 308 500 FAX +353 51 844 913

PROJECT  
**STRATEGIC HOUSING DEVELOPMENT AT SOUTHGATE, DROGHEDA, CO. MEATH**

DRG. TITLE  
**TYPICAL ROAD CONSTRUCTION DETAILS SHEET 3**

CLIENT  
**ROCKMILL LTD.**

SCALE AS SHOWN @A1 FILE REF. 190081-2006

DRG. NO. 190081-2006 A