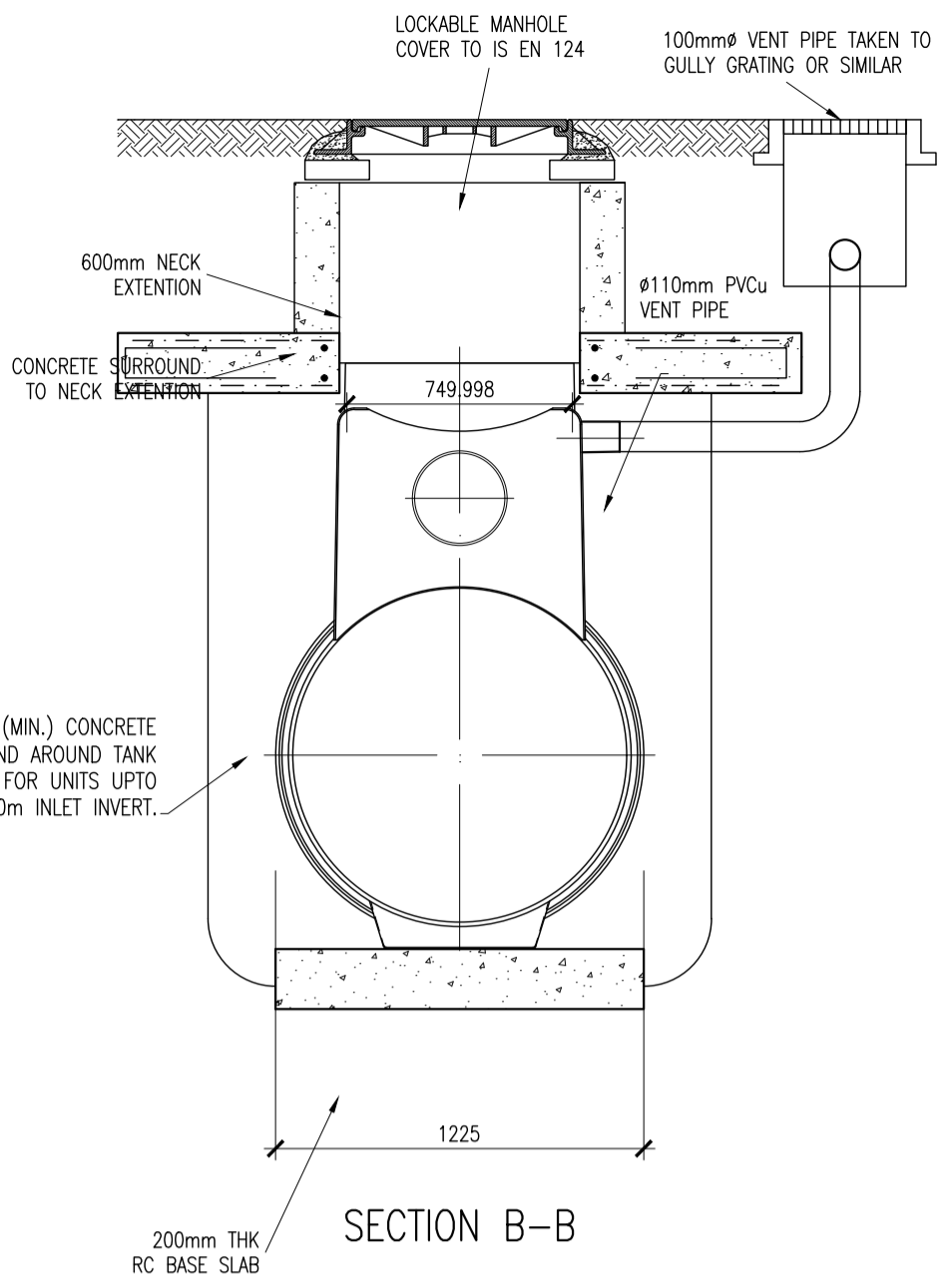
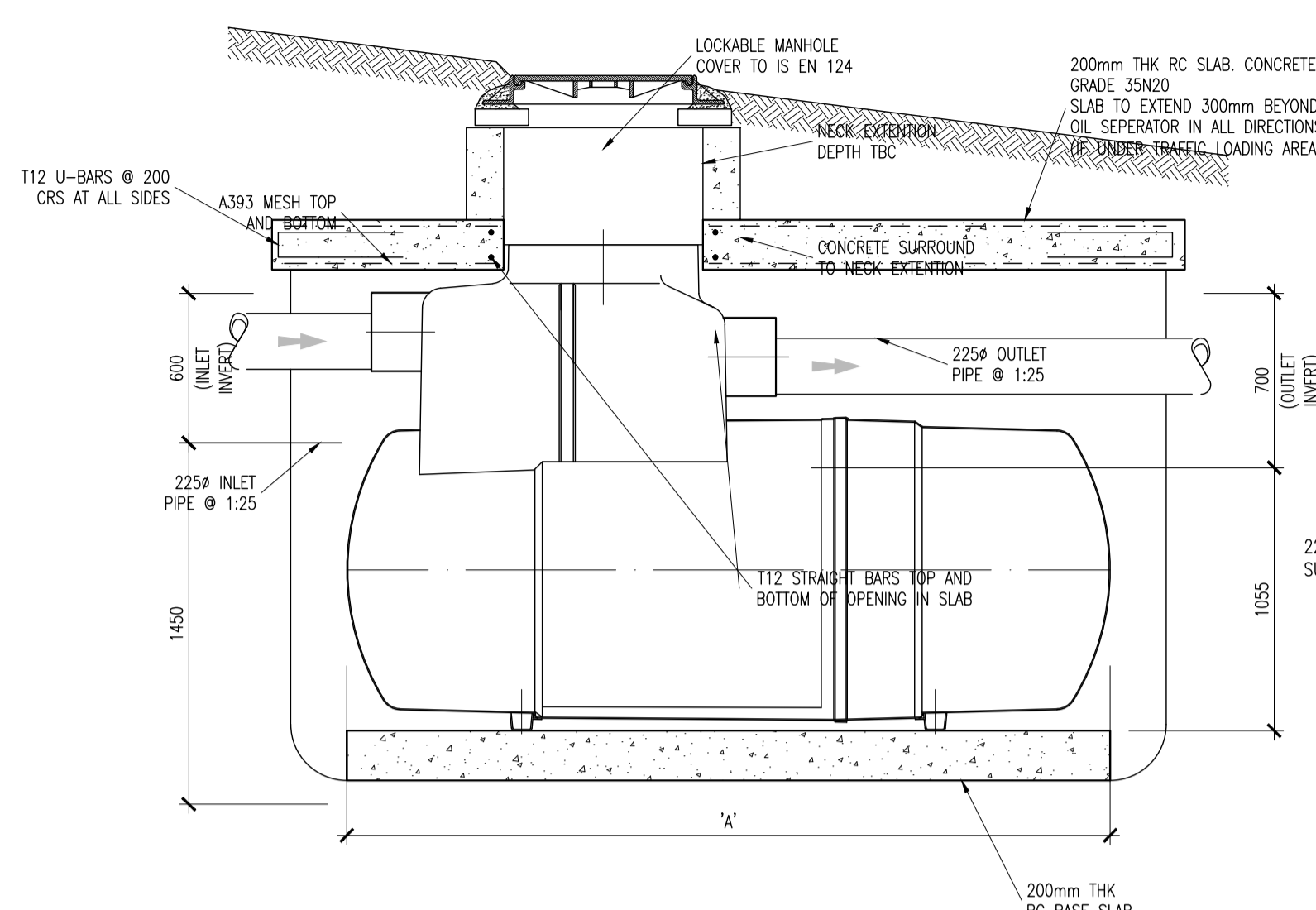
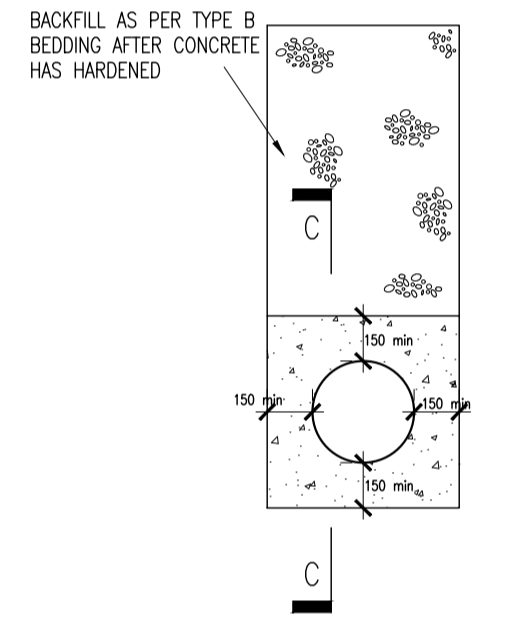
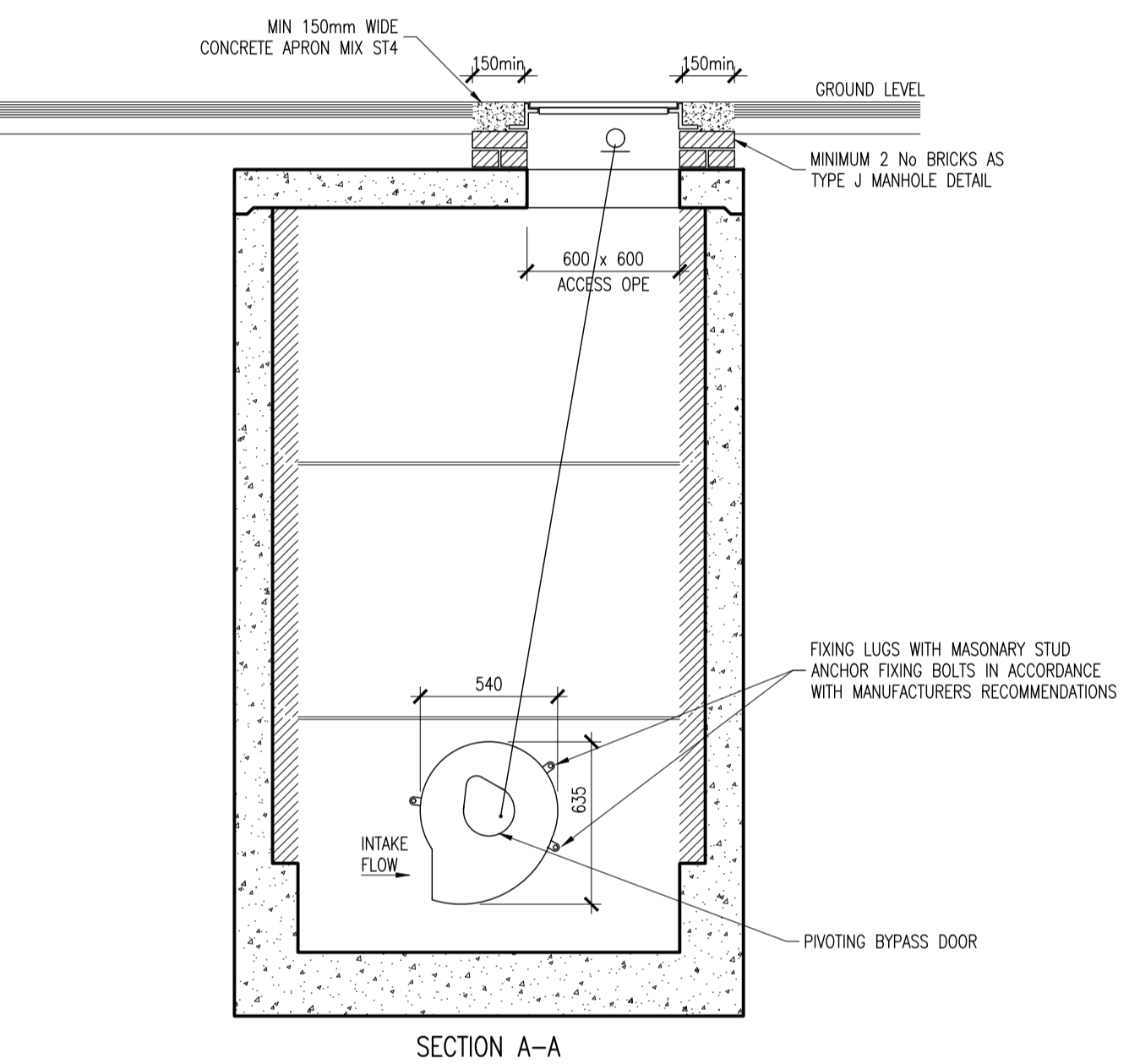


DIMENSIONS PLAN

UNIT REF No.	NOMINAL FLOW	LENGTH	DIAMETER	STD. PIPE#	APPROX. EMPTY WEIGHT (KG)	FALL ACROSS UNIT
NSBP006	6 L/S	1700	1350	160	160	100
NSBE015	15 L/S	2947	1220	315	240	100
NSBE030	30 L/S	4265	1420	450	300	100

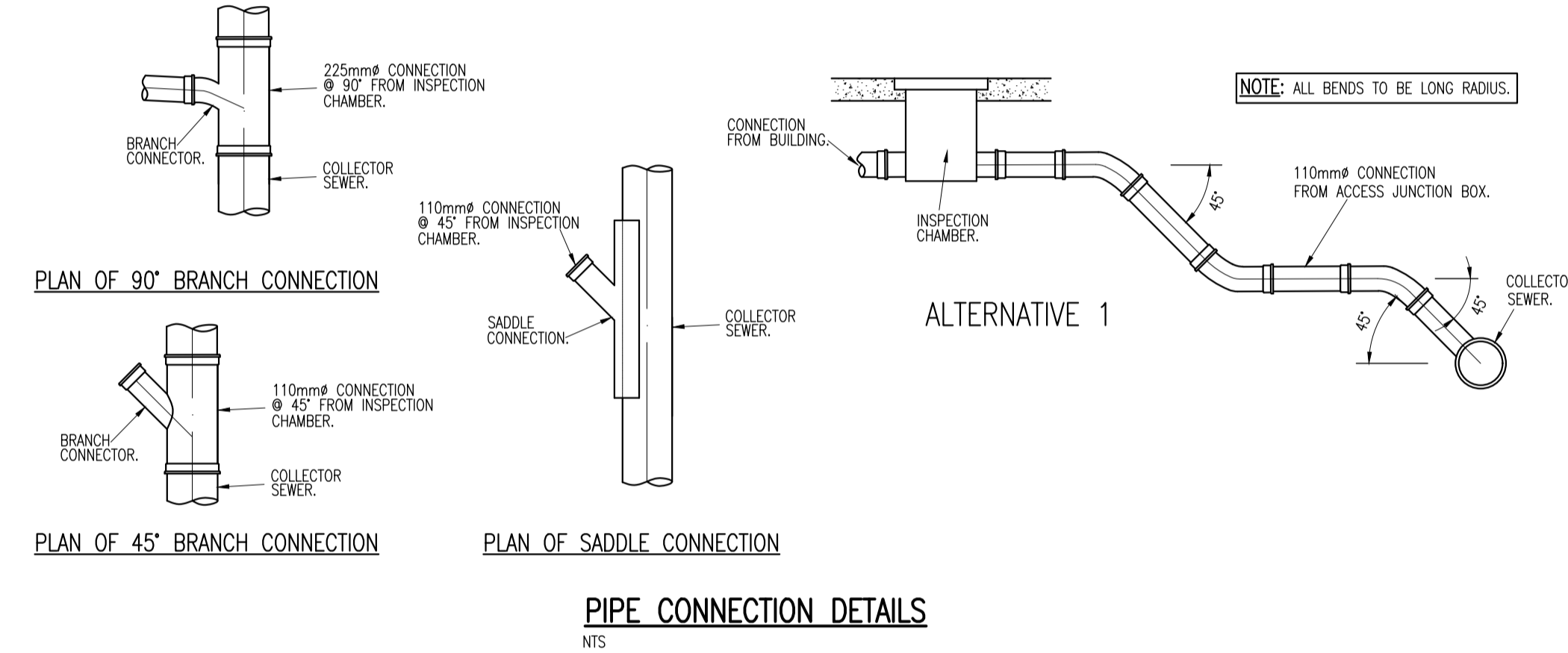
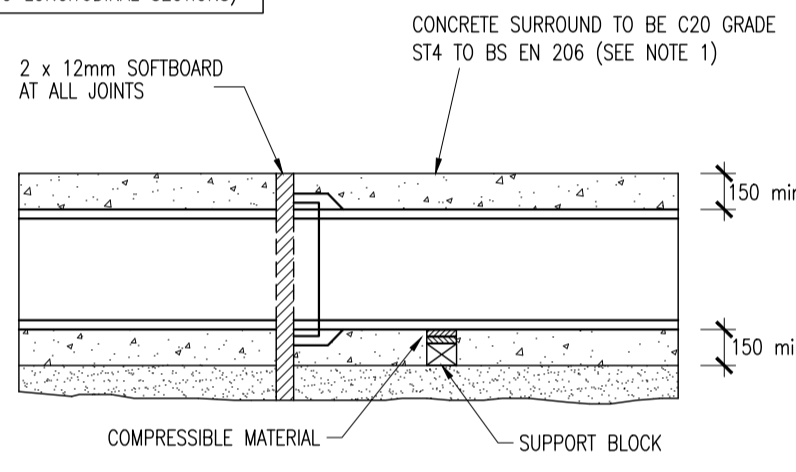


PETROL INTERCEPTOR DETAIL
SCALE 1:25

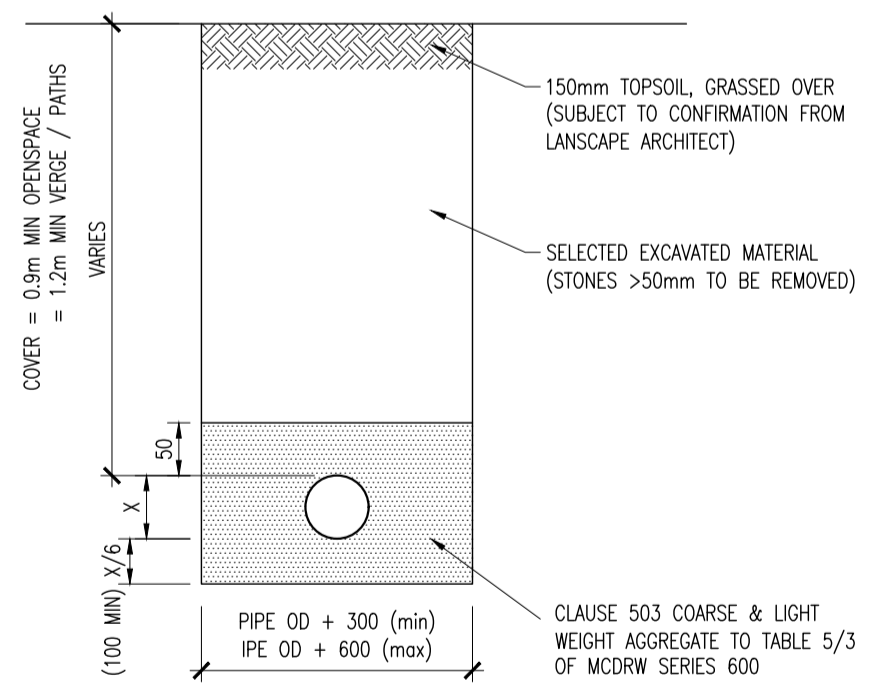


CONCRETE BEDDING TO BE USED WHERE COVER LESS THAN 1.2m AND / OR AS DIRECTED BY THE ENGINEER (REFER TO LONGITUDINAL SECTIONS)

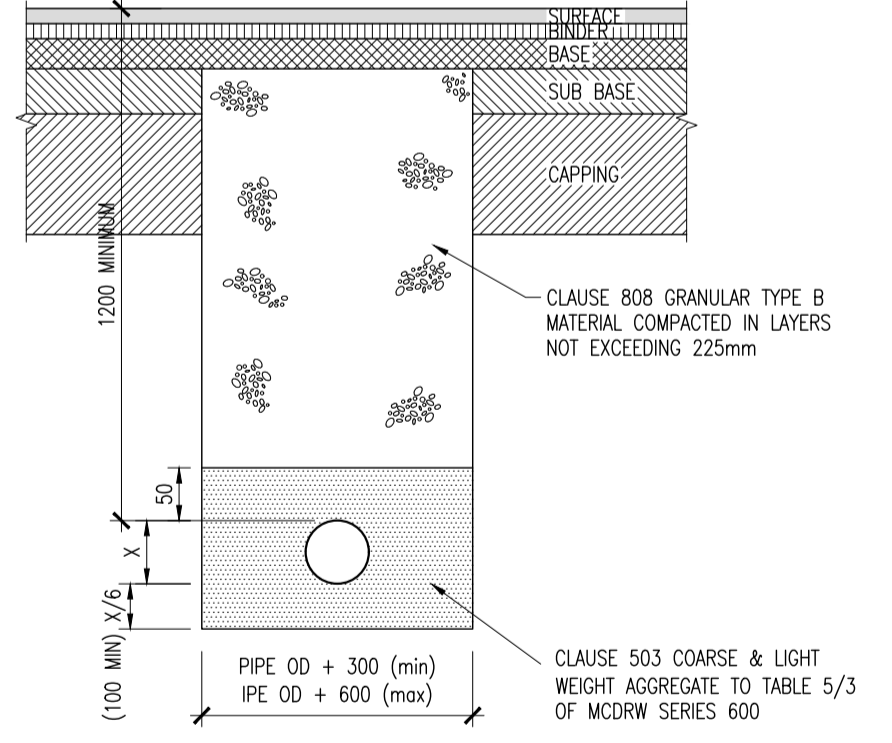
TYPE Z CONCRETE BEDDING/SURROUND (COVER 750mm - 1200mm)



PIPE CONNECTION DETAILS
N/S



A - BEDDING/BACKFILL DETAIL ACROSS OPEN SPACE (SIMILAR)

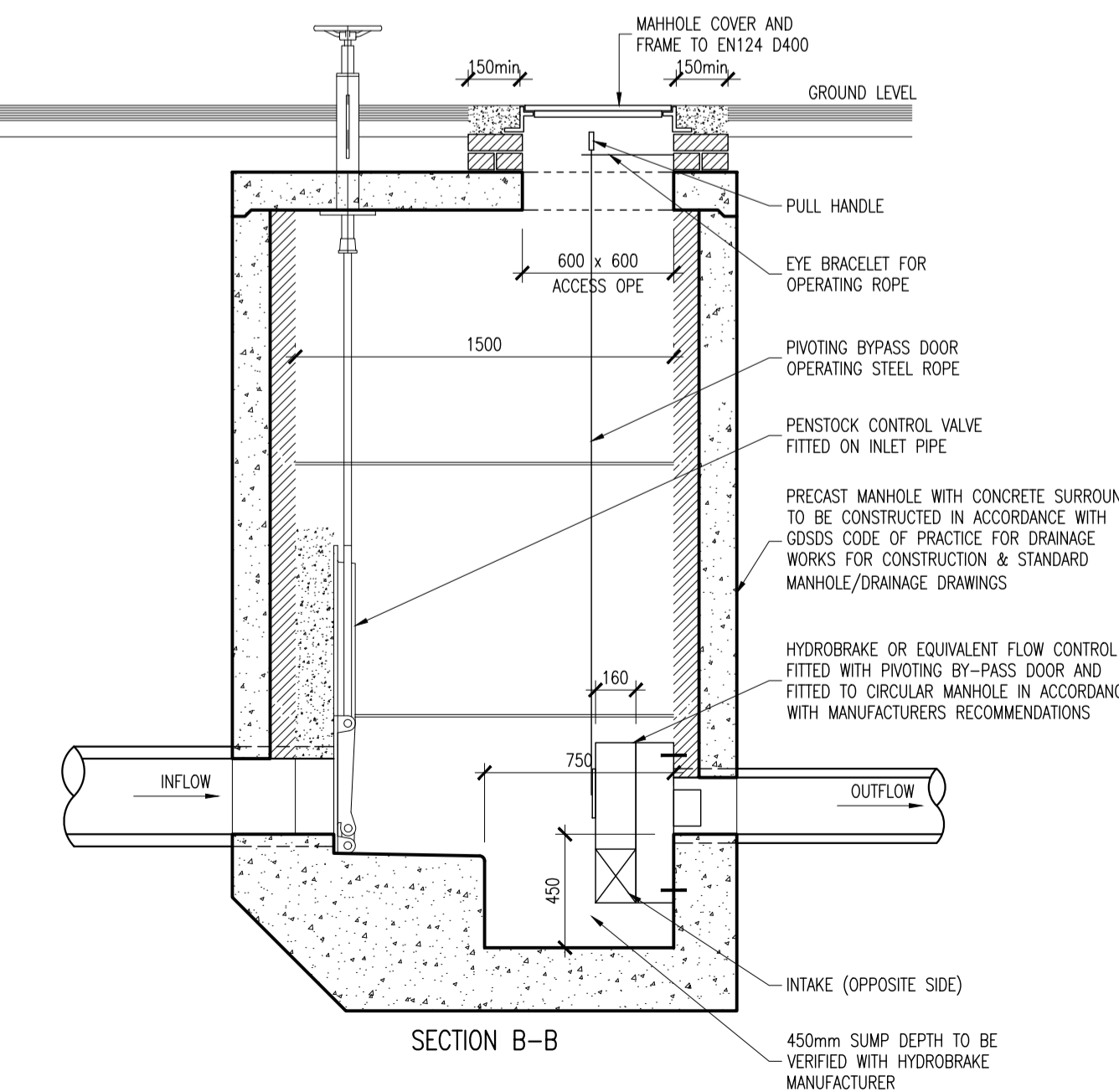


B - BEDDING/BACKFILL DETAIL IN ROADWAYS/VERGES/PATHS

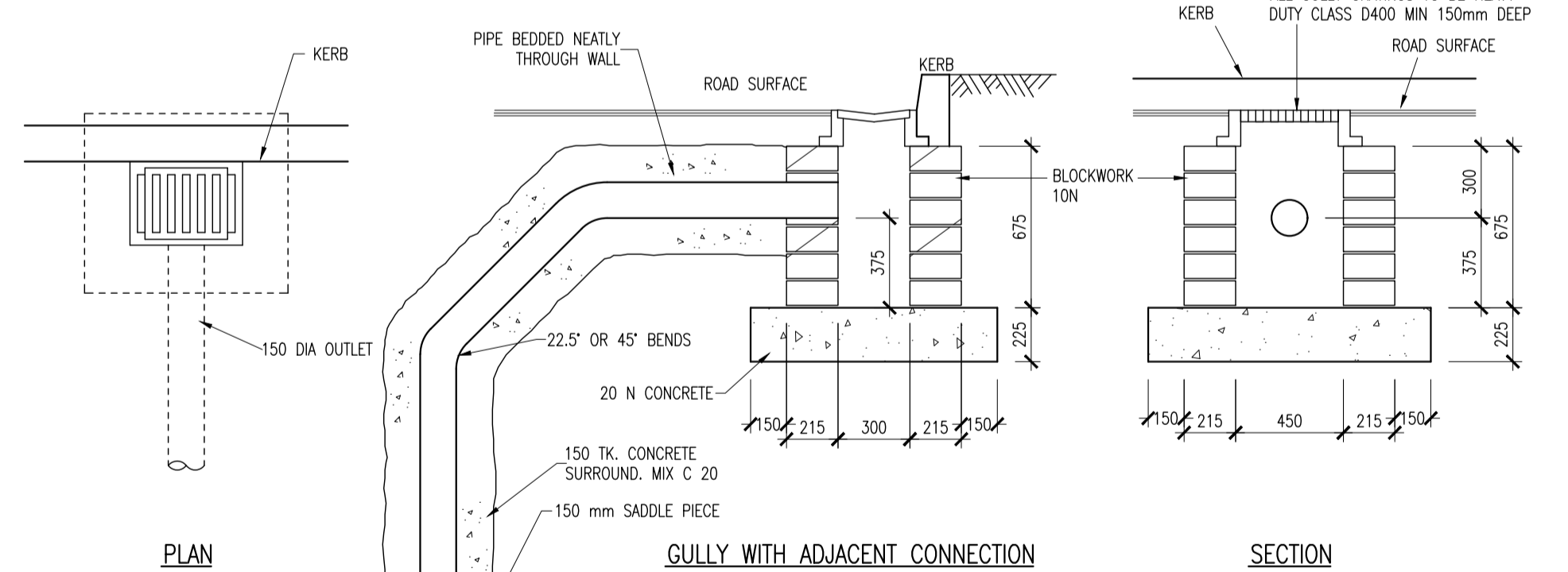
- NOTES:**
- ALL DIMENSIONS ARE IN MILLIMETRES.
 - DIMENSION X IS THE EXTERNAL DIAMETER OF THE PIPE (ø225 = 301mm, ø450 = 588mm & WIDER AT SOCKETS).
 - THE MINIMUM AND MAXIMUM WIDTH OF THE TRENCH APPLIES ON AND BELOW A LINE 300mm ABOVE THE OUTSIDE TOP OF THE PIPE. ABOVE THE 300mm LINE THE TRENCH BACKFILL MATERIAL SHALL BE AS PER TYPICAL TRENCH DETAILS.
 - BEDDING TO BE COMPACTED IN ACCORDANCE WITH SPECIFICATION & MANUFACTURERS RECOMMENDATIONS

TYPE S (COVER > 1.2 METRES TO CROWN)

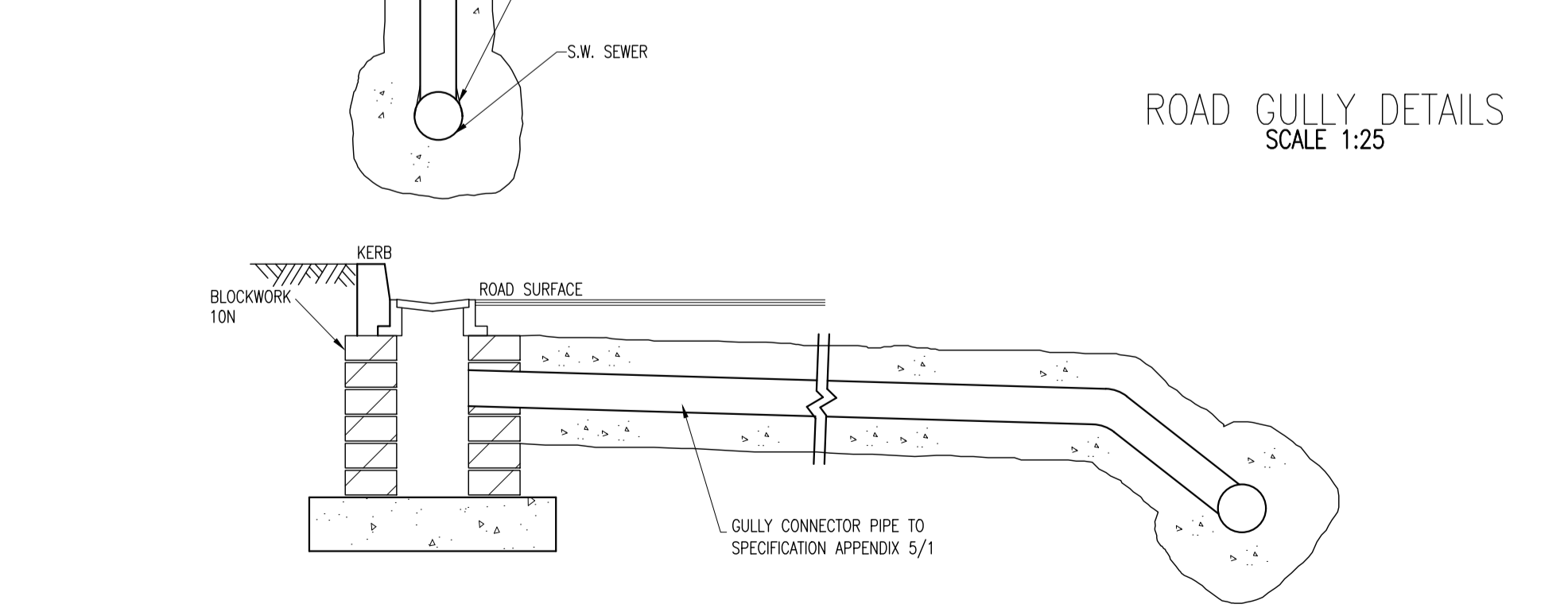
PIPE BEDDING DETAILS
SCALE 1:25



FLOW CONTROL MANHOLE DETAIL
SCALE 1:25



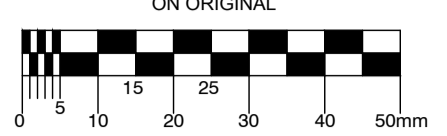
GULLY WITH ADJACENT CONNECTION



GULLY WITH CONNECTION ON OPPOSITE SIDE OF ROAD

ROAD GULLY DETAILS
SCALE 1:25

© COPYRIGHT OF THIS DRAWING IS RESERVED BY DBFL CONSULTING ENGINEERS. NO PART SHALL BE REPRODUCED OR TRANSMITTED WITHOUT THEIR WRITTEN PERMISSION.



- NOTES:**
- ALL WORKS TO BE CONSTRUCTED IN ACCORDANCE WITH NRA SPECIFICATION FOR ROAD WORKS U.N.O.
 - ALL REINFORCED CONCRETE ON THIS DRAWING SHALL BE U.N.O.1: 35N20 COVER = 50mm MIN
 - SURFACE FINISHES FOR CONCRETE:
 - CLASS F1 FOR ALL CONCRETE 100mm OR MORE BELOW GROUND LEVEL.
 - CLASS F3 FOR ALL EXPOSED CONCRETE ABOVE 100mm BELOW GROUND LEVEL.
 - ALL EXPOSED CORNERS ON CONCRETE SHALL BE CHAMFERED WITH 25mm x 25mm CHAMFERS.
 - ALL STRUCTURAL CONCRETE (HEADWALLS, RC MANHOLES, PETROL INTERCEPTOR SLABS) TO RECEIVE MC DUR 1680 (OR SIMILAR APPROVED TAR MODIFIED EPOXY RESIN) TO ALL BURIED SURFACES, TO FINISH 100mm BELOW GROUND LEVEL.
 - ALL SEWERS SHALL BE PRESSURE TESTED PRIOR TO BACKFILLING.
 - RIGID PIPES SHALL MEAN CAST OR SPUN IRON, CONCRETE, ASBESTOS CEMENT OR CLAY.
 - CLASS D400 MANHOLE COVER FRAMES TO BE 150mm DEEP IN ROADS AND 100mm DEEP IN FOOTPATHS AND GREEN AREAS.
 - ALL AGGREGATES PROPOSED FOR USE ON THIS SCHEME SHALL MEET FULLY THE REQUIREMENTS OF THE NRA SPECIFICATION FOR ROAD WORKS AND IN ADDITION THE REQUIREMENTS STATED IN STANDARD RECOMMENDATION S.R. 21:2014 GUIDANCE ON THE USE OF I.S. EN 1242:2002 +A1:2007-AGGREGATES FOR UNBOUND AND HYDRAULICALLY BOUND MATERIALS FOR USE IN CIVIL ENGINEERING WORK AND ROAD CONSTRUCTION.
 - ALL FOUL SEWERS, MANHOLES, AND CONNECTIONS TO BE CONSTRUCTED IN ACCORDANCE WITH IRISH WATER CODE OF PRACTICE AND STANDARD DETAILS.
 - ALL SURFACE WATER SEWERS, MANHOLES, AND CONNECTIONS TO BE CONSTRUCTED IN ACCORDANCE WITH THE GRATER DUBLIN REGIONAL CODE OF PRACTICE FOR DRAINAGE WORKS.

A	080721	SHD STAGE 3 PLANNING	GMC	ASM
REV.	DATE	DESCRIPTION	BY	CHKD.

PLANNING SHD STAGE 3

DESIGNED	DCG	PREPARED	GMC
DATE	JUL 2020	CHECKED	DMW



Dublin Office: Ormrod House, Upper Ormrod Quay, Dublin 7, Ireland. PHONE +353 1 400 4000 FAX +353 1 400 4050

Waterford Office: Unit 2, The Chandlery, 1-2 O'Connell Street, Waterford, Ireland. PHONE +353 51 308 500 FAX +353 51 844 913

DBFL Consulting Engineers email: info@dbfl.ie site: www.dbfl.ie

PROJECT
STRATEGIC HOUSING DEVELOPMENT AT SOUTHGATE, DROGHEDA, CO. MEATH

DRG. TITLE
TYPICAL DRAINAGE DETAILS SHEET 2

CLIENT
ROCKMILL LTD.

SCALE	AS SHOWN @A1	FILE REF.	190081-3012
DRG. NO.	190081-3012		A